

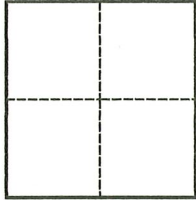
# CORNER RECORD

Agency Index CR22-066  
Document Number 028-222-69ADJ

City of MILL VALLEY County of Marin, California  
Brief Legal Description Intersection of Sycamore and Fern Avenues - Near APN 028-222-69

### CORNER TYPE

### COORDINATES (Optional)



- Government Corner  Control
- Meander  Property
- Rancho  Other

N. \_\_\_\_\_ E. \_\_\_\_\_  
 Elevation \_\_\_\_\_  
 Units Metric  U.S. Survey Foot   
 Horizontal Datum \_\_\_\_\_  
 Zone \_\_\_\_\_ Epoch Date \_\_\_\_\_  
 Vertical Datum \_\_\_\_\_

Date of Survey March 25, 2022

- Complies with Public Resources Code §§8801-8819  
 Complies with Public Resources Code §§8890-8902

PLS Act Ref.:  8765(d)  8771  8773  Other:

Corner/Monument:  Left as found  Established  Rebuilt  Pre-Construction  
 Found and tagged  Reestablished  Referenced  Post-Construction

Narrative of corner identified and monument as found, set, reset, replaced, or removed:

See sheet #2 for description(s):

Found 2" brass disk with a "X", stamped "LS 4694" in a well monument at the intersection of Sycamore Avenue with Fern Avenue. Referenced monument on 11-23-2021.

Said well monument was destroyed during sewer main construction. Set straddlers on 1-6-2022.

Set 2" brass disk with a "punch", stamped "LS 5092" in a well monument at the intersection of Sycamore Avenue with Fern Avenue. Punched monument on 3-25-2022.

### SURVEYOR'S STATEMENT

This Corner Record was prepared by me or under my direction in conformance with

the Professional Land Surveyors' Act on March 25, 2022

Signed Mike Buti P.L.S. or R.C.E. No. LS 5092



### COUNTY SURVEYOR'S STATEMENT

This Corner Record was received 6/11/22

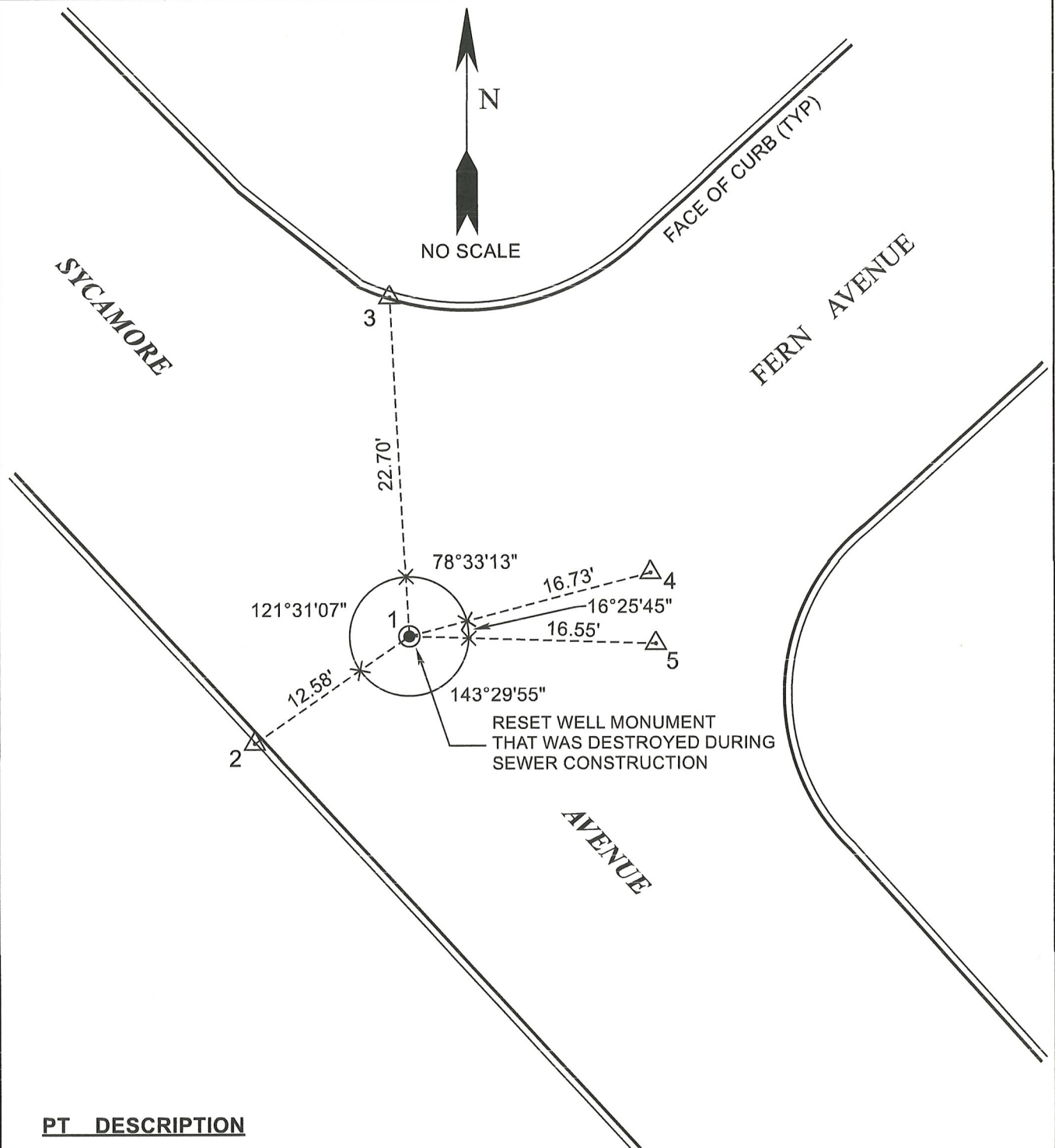
and examined and filed 6/22/2022

Signed T.W. Park P.L.S. No. 8176

Title County Surveyor

County Surveyor's Comment





**PT DESCRIPTION**

- 1 FOUND 2" BRASS DISK WITH AN "X", STAMPED "LS 4694" IN A WELL MONUMENT, SET 2" BRASS DISK WITH A "PUNCH", STAMPED "LS 5092" IN A WELL MONUMENT
- 2 FOUND MAG NAIL AND WASHER MARKED "JL ENGINEERING CONTROL" ON TOP OF CURB
- 3 FOUND MAG NAIL AND WASHER MARKED "JL ENGINEERING CONTROL" ON TOP OF CURB
- 4 FOUND MAG NAIL AND WASHER MARKED "JL ENGINEERING CONTROL"
- 5 FOUND MAG NAIL AND WASHER MARKED "MFLS CONTROL"

**NOTES:**

1. ALL DISTANCES SHOWN HEREON ARE IN FEET AND DECIMALS THEREOF.
2. ALL DISTANCES AND BEARINGS ARE BOTH RECORD AND MEASURED.